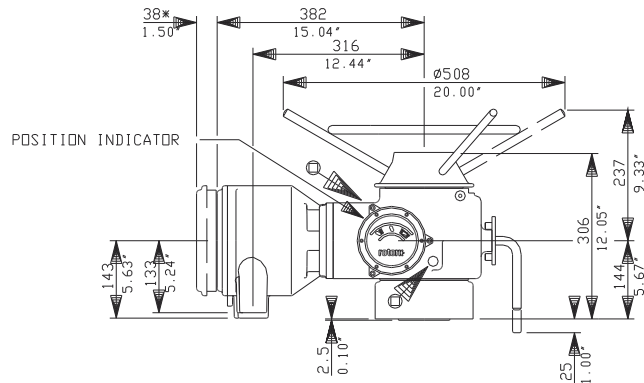
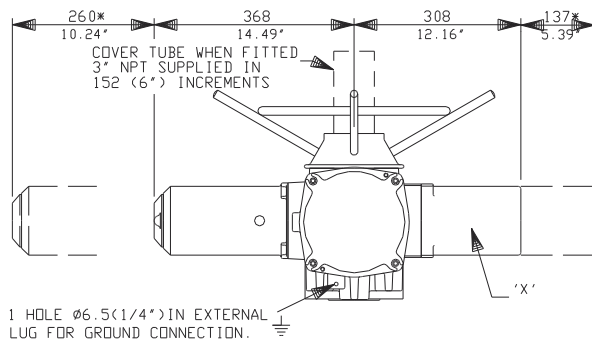
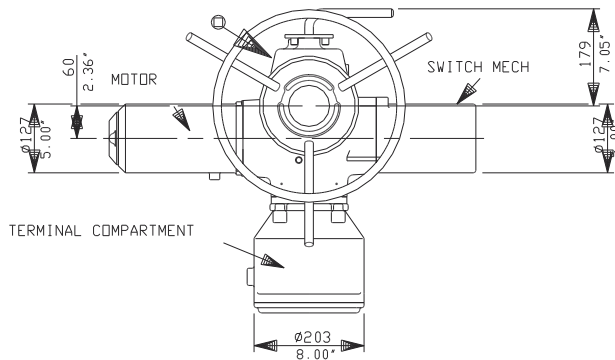
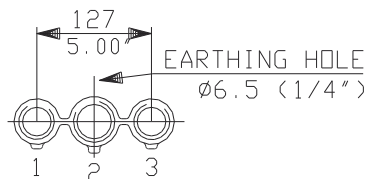
14-16A THRUST BASES

14-16A NON-THRUST BASES

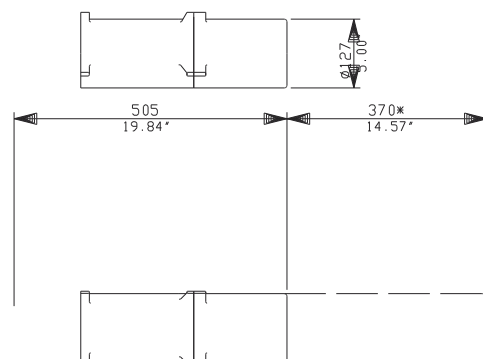


ADD-ON-PAK 1
REPLACES 'X' &
SWITCH MECH IF REQUIRED.

CONDUIT ENTRIES (N.T.S)



Nos.1 & 3 TAPPED 1 1/4" NPT
No.2 TAPPED 1 1/2" NPT
STANDARD ALTERNATIVES IF SPECIFIED
2 X M32, 1 X M40
2 X PG16, 1 X PG29

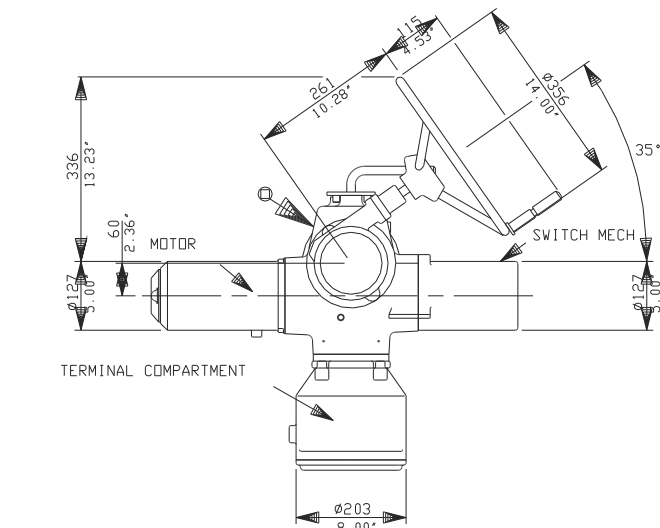


rotork

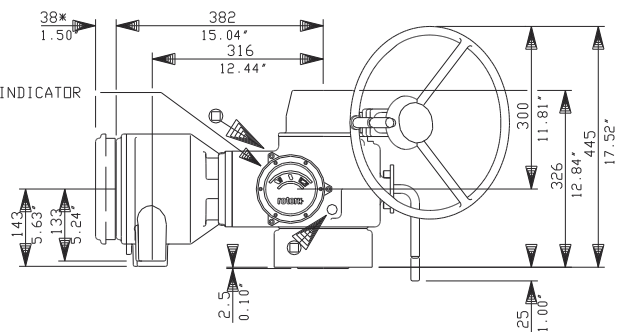
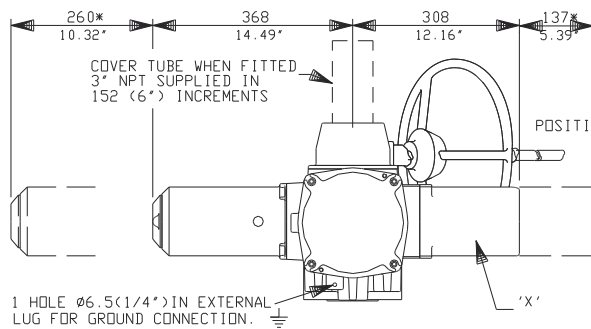
Rotork Controls Ltd.
Bath, England BA1 3JD
Bath (01225)733200

14A(THW) DATA

Date 101097

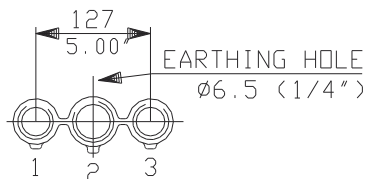


14-16A SYNCROSET WITH OPTIONAL SIDE HANDWHEEL

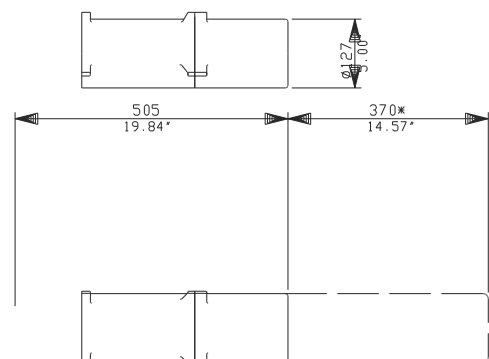


ADD-ON-PAK 1
REPLACES 'X' &
SWITCH MECH IF REQUIRED.

CONDUIT ENTRIES (N.T.S)



Nos.1 & 3 TAPPED 1 1/4" NPT
No.2 TAPPED 1 1/2" NPT
STANDARD ALTERNATIVES IF SPECIFIED
2 X M32, 1 X M40
2 X PG16, 1 X PG29



rotork
Rotork Controls Ltd.
Bath, England BA1 3JD
Bath (01225)733200
14A(SHW) DATA
Date 101097