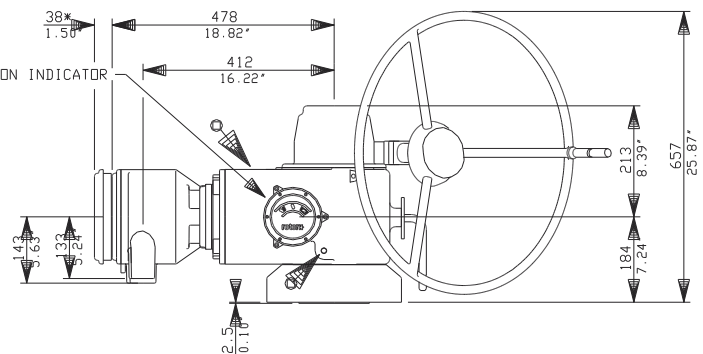
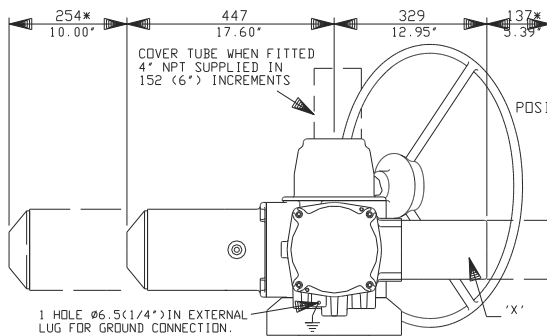
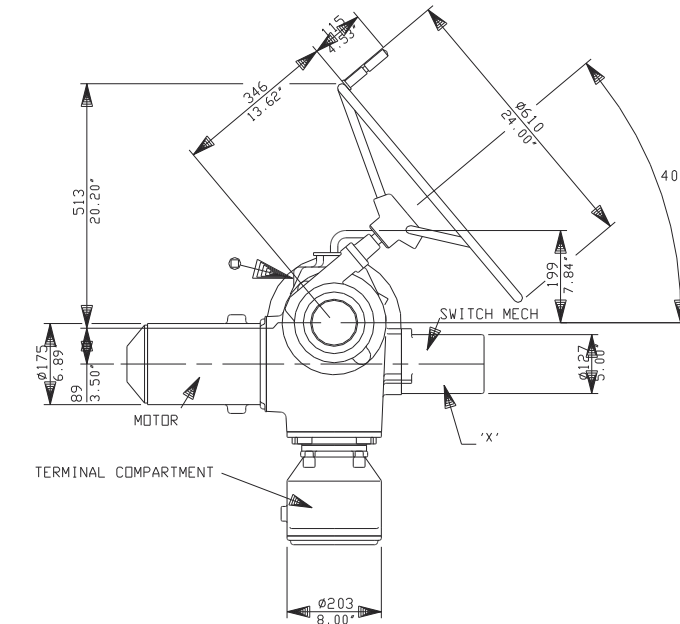
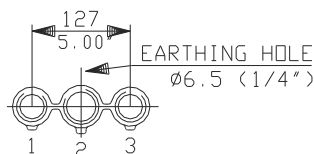


# 40A SYNCROSET WITH OPTIONAL SIDE HANDWHEEL

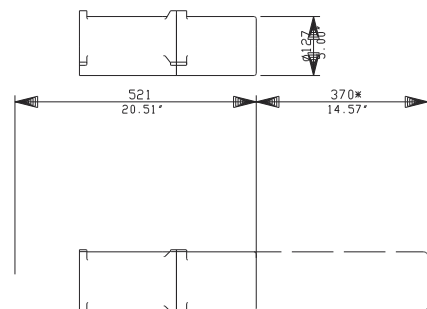


ADD-ON-PAK 1  
REPLACES 'X' &  
SWITCH MECH IF REQUIRED.

## CONDUIT ENTRIES (N.T.S)



Nos.1 & 3 TAPPED 1 1/4" NPT  
No.2 TAPPED 1 1/2" NPT  
STANDARD ALTERNATIVES IF SPECIFIED  
2 X M32, 1 X M40  
2 X PG16, 1 X PG29



**rotork**

Rotork Controls Ltd.  
Bath, England BA1 3JQ  
Bath (01225) 733200

40A(SHW) DATA

Date 141097