

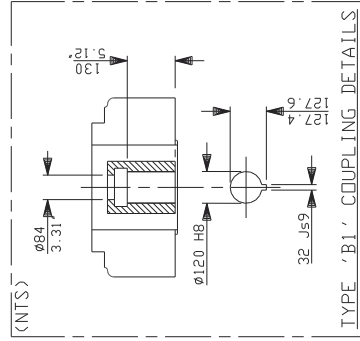
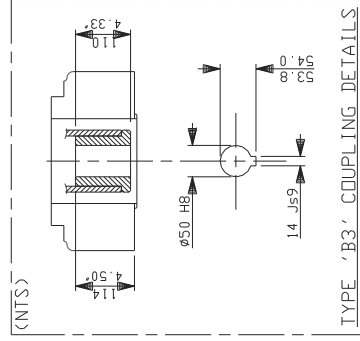
The image contains two technical drawings of FPS base details, labeled F30 and F425.

**F30 BASE DETAILS:**

- Top View:** Shows a circular base with an outer diameter of  $\varnothing 350$  and a central hole diameter of  $\varnothing 5.995$  (5.995" F30). There are 8 holes, M20x2.5, spaced equidistantly. The distance between the center of the base and the center of one of the 8 holes is 13.78". The distance between the center of the base and the center of one of the 4 larger holes is 22.5".
- Side View:** Shows the base with a height of 11.81". The distance between the center of the base and the center of one of the 4 larger holes is 22.5".
- Text:** "8 HOLES M20x2.5, DEEP, EQUI-SPACED AS SHOWN ON A 254 F.C.D. (1305210-F30)".

**F425 BASE DETAILS:**

- Top View:** Shows a circular base with an outer diameter of  $\varnothing 300$  and a central hole diameter of  $\varnothing 5.995$  (5.995" F425). There are 8 holes, M16x2, spaced equidistantly. The distance between the center of the base and the center of one of the 8 holes is 11.81". The distance between the center of the base and the center of one of the 4 larger holes is 22.5".
- Side View:** Shows the base with a height of 11.81". The distance between the center of the base and the center of one of the 4 larger holes is 22.5".
- Text:** "8 HOLES M16x2, THRO, EQUI-SPACED AS SHOWN ON A 254 F.C.D. (1305210-F25)".



**rotork** Rotor Controls Ltd.  
Bath, England BA1 3JD  
Bath 01225/733200

90A BASE + COUPS

Date 14/10/97