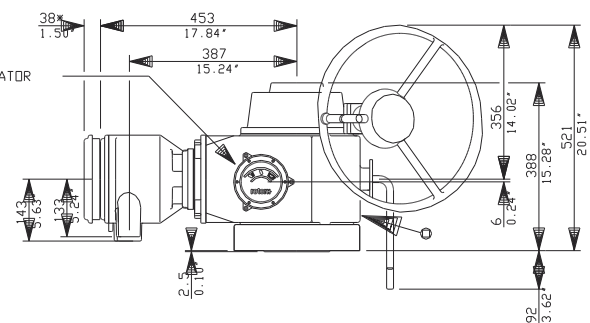
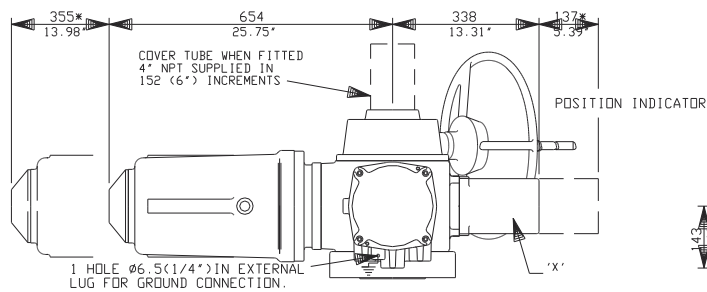
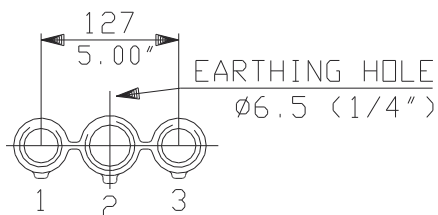


91A SYNCROSET WITH STANDARD HANDWHEEL

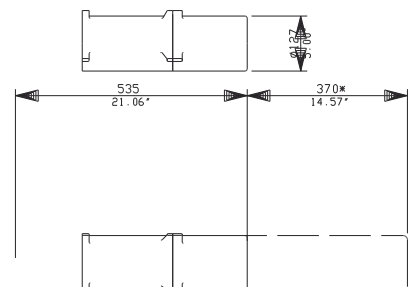


ADD-ON-PAK 1
REPLACES 'X' &
SWITCH MECH IF REQUIRED.

CONDUIT ENTRIES (N.T.S)



Nos.1 & 3 TAPPED 1 1/4" NPT
No.2 TAPPED 1 1/2" NPT
STANDARD ALTERNATIVES IF SPECIFIED
2 X M32, 1 X M40
2 X PG16, 1 X PG29



rotork

Rotork Controls Ltd.
Bath, England BA1 3JQ
Bath (01225) 733200

91A(SHW) DATA

Date 141097