

## EU - Type Examination Certificate

- (1)
- (2) Equipment and protective systems intended for use in potentially explosive atmospheres – Directive 2014/34/EU
- (3) EU - Type Examination Certificate Number

**EPS 17 ATEX 1 132 X**

**Revision 3**

- (4) Equipment: Actuator, Type Ex Max-\*\*\*
- (5) Manufacturer: Schischek GmbH
- (6) Address: Mühlsteig 45, Gewerbegebiet Süd 5  
90579 Langenzenn  
Germany
- (7) This equipment and any acceptable variation thereto are specified in the annex to this certificate and the documentation therein referred to.
- (8) Bureau Veritas Consumer Products Services Germany GmbH, notified body No. 2004 in accordance with Article 21 given in the Directive 2014/34/EU of the European Parliament and of the Council of 26 February 2014, certifies that this equipment has been found to comply with the essential health and safety requirements relating to the design and construction of equipment and protective systems intended for use in potentially explosive atmospheres, given in Annex II of the Directive. The examination and test results are recorded in the confidential documentation under the reference number 17TH0219\_03.
- (9) Compliance with the essential health and safety requirements has been assured by compliance with:

**EN IEC 60079-0:2018**

**EN 60079-1:2014**

**EN 60079-11:2012**

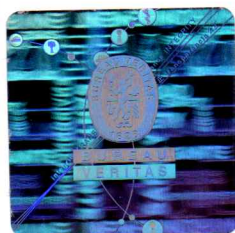
**EN 60079-31:2014**

- (10) If the sign "X" is placed after the certificate number, it indicates that the equipment is subject to special conditions for safe use specified in the annex to this certificate.
- (11) This EU - Type Examination Certificate relates only to the design and construction of the specified equipment in accordance with Directive 2014/34/EU. Further requirements of this Directive apply to the manufacture of this equipment and its placing on the market. Those requirements are not covered by this certificate.
- (12) The marking of the equipment shall include the following:



II 2 (2) G Ex db [ib Gb] IIC T6, T5, T4 Gb

II 2 (2) D Ex tb [ib Db] IIC T80°C, T95°C, T130°C Db



Certification department of explosion protection

Tuerkheim, 2025-06-06

Ulrich Feike



Certificates without signature and seal are void. This certificate is allowed to be distributed only if not modified. Extracts or modifications must be authorized by Bureau Veritas Consumer Products Services Germany GmbH.

(13)

## Annex

(14) **EU - Type Examination Certificate EPS 17 ATEX 1 132 X**

**Revision 3**

(15) Description of equipment:

The actuator, type Ex Max-\*\*\* consists of a flameproof enclosure with actuator shafts that accommodate electromechanical components. The internal portion is temperature controlled. The flameproof enclosure is mounted in a protective housing together with additional mechanical components. The gears and mechanical actuators mounted in the protective housing do not form part of this type approval.

Connection is by means of a connecting lead (open-ended line).

For coated housings with a layer thickness of more than 0.2 mm, Ex-marking IIB can be used.

Modification of revision 2:

Correction of intrinsic parameters at EEXi output, JP101.

Modification of revision 3:

New special condition for safe use an update the standards.

Electrical data:

Power supply: terminals 1-5 (X1, XA)

Nominal voltage $U_o/U$ .....	up to	24 – 240 V
Rated voltage .....	max.	240 V
Rated current .....	max.	2.5 A

Option –S terminals 1-6 (XB)

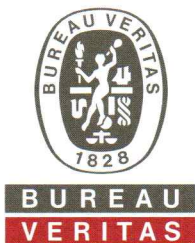
Nominal voltage $U_o/U$ .....	up to	24- 230 V
Rated voltage .....	max.	240 V
Rated current .....	max.	5.0 A

Option –Y Klemmen 1-6 (X2, XB)

Nominal voltage $U_o/U$ .....	up to	24 V
Rated voltage .....	max.	24 V
Rated current.....	max.	30 mA

Rated values are maximum values, the actual electrical values are determined by mounted electrical apparatus. Within these limiting values complying with the appropriate standards, the manufacturer specifies the final limiting values dependent on power supply specifications, operating mode, utilization category, etc. Any additional technical features are specified in the test documents and the operating manual.

Ambient temperature	T6	-40 °C up to +40 °C
	T5	-40 °C up to +50 °C
	T4	-40 °C up to +60 °C



EU - Type Examination Certificate EPS 17 ATEX 1 132 X

Revision 3

Intrinsic safe circuits

Option -BF, terminals 1,2 (EEXi output, JP101)

Uo ..... 5.88 V
Io ..... 24.75 mA
Po ..... 0.037 W

Linear circuit

Li negligible

Ci negligible

Maximum of external lumped capacitance and inductance:

Table with 4 columns: IIC, Ex ib IIB, IIA, and rows for Lo and Co.

RS232, terminals 1-6 (EEXi output, SV101)

Uo ..... 5.88 V
Io ..... 119 mA
Po ..... 0.7 W

Linear circuit

Li negligible

Ci negligible

Maximum of external lumped capacitance and inductance:

Table with 4 columns: IIC, Ex ib IIB, IIA, and rows for Lo and Co.

(16) Reference number: 17TH0219\_02

(17) Special conditions for safe use:

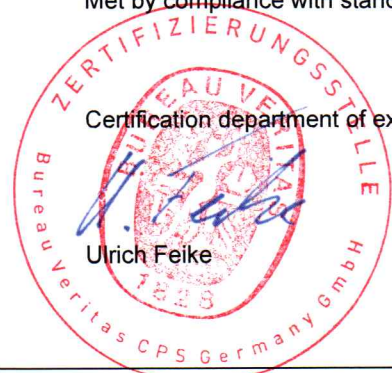
For repair of the flameproof joints due regard must be given to the structural specifications provided by the manufacturer. Repair based on the values in tables 2 and 3 of EN 60079-1 is not accepted.

The actuator shall be used only together with certified enclosure provided by Schischek.

Only for coated enclosure - Warning of electrostatic discharge, see operating instructions.

(18) Essential health and safety requirements:

Met by compliance with standards.



Certification department of explosion protection

Tuerkheim, 2025-06-06