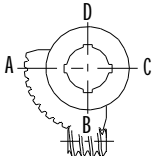


1				2				3				4			
A	DESCRIPTION			MOUNTING HOLES - BOLT CIRCLE (OFF CENTRES)				BORE: STEM ACCEPTANCE WITH KEYWAY IN ACCORDING WITH STANDARD			TORQUE				
	RATIO	TURNES TO CLOSE	TRAVEL (1/4 TURN)	WEIGHT	NR OF HOLES	MIN PCD - ØHOLE	MAX PCD + ØHOLE	ACCORDING TO ISO 5211 / MSS SP-101	MIN	MAX	STANDARD	OUTPUT	INPUT	MA	
	109:1	27	-5° TO 95°	25 kg	4	Ø104 mm	Ø195 mm	F12 - F14 - F16	Ø35 mm	Ø80 mm	ISO 773 A	4500 Nm	136 Nm	33 ± 15%	
				8	N/A	N/A	N/A								
				55 lbs	4	Ø4.09 inch	Ø7.67 inch	FA12 - FA14 - FA16							
8				N/A	N/A	N/A									
AS PART OF CONTINUOUS PRODUCT DEVELOPMENT, ALL DETAILS SUBJECT TO CHANGE WITHOUT PRIOR NOTICE. FOR UP TO DATE DETAILS PLEASE VISIT <a href="http://www.rotork.com">www.rotork.com</a>															

AS PART OF CONTINUOUS PRODUCT DEVELOPMENT, ALL DETAILS SUBJECT TO CHANGE WITHOUT PRIOR NOTICE. FOR UP TO DATE DETAILS PLEASE VISIT [www.rotork.com](http://www.rotork.com)

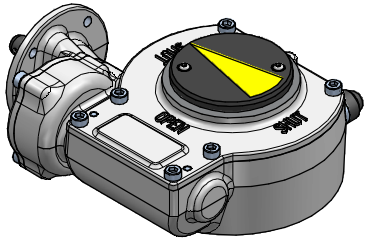
KEYWAY POSITION OF GEARBOX SHOWN IN CLOSED POSITION



TOP VIEW

KEY DETAILS

4 HOLES Ø10.5 THROUGH EQUI SPACED ON Ø102 PCD. AS SHOWN



ISOMETRIC VIEW  
1:5

00				DD-MMM-YYYY	FIRST ISSUE
Rev	CN	Revised	Approved	Date	Change Description

<div><div><div>rotork</div><div>Gears</div></div><div>LOSSER - NETHERLANDS</div><div>www.rotork.com</div></div>	<p>Ⓢ This drawing is confidential and is the property of Rotork Gears and must not be reproduced either wholly or partly. All rights in respect of patents, designs and copyrights are reserved. ©2012</p>	Document type		DETAIL DRAWING		Title			
				Dimensions in mm		E2000			
				Scale 1:2		E2000 STANDARD ASSEMBLY F16 BASE, RH PROJECTION WITH E-FLANGE			
		Created	VIGNESH G	7-1-2013		Drawing Number		Rev	
		Checked	P LINE	12-2-2013		E2000N RH		A	
Approved	-	DD-MMM-YYYY		Sheet 1 of 3		Size A3			