



Keeping the World Flowing
for Future Generations

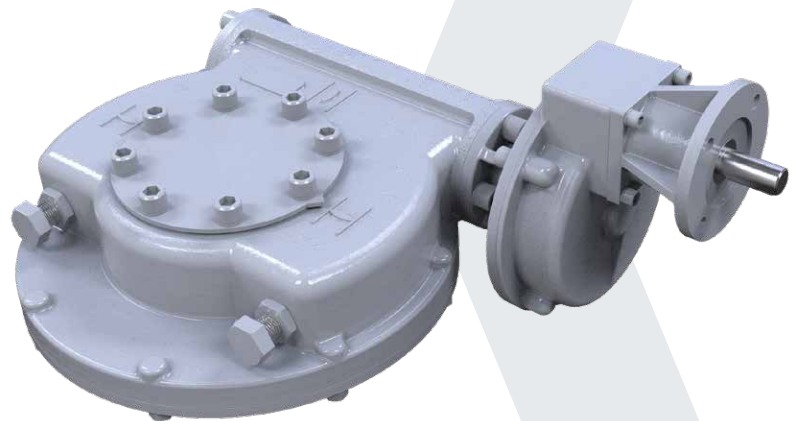
IW Mk2 Range

Quarter-turn worm gearboxes

IW Mk2 quarter-turn worm gear operators have been designed to suit isolating duty motorized operation of ball, plug and butterfly valves.

The gearboxes include low lead angle gearing designed to be inherently self-locking, and offer an increased torque output per size compared with the previous IW range. IW Mk2 gearboxes feature a removable output sleeve to facilitate bore and keyway machining, and an indexable baseplate to allow on-center or off-center mounting to the valve flange without special machining.

The standard operating temperature range is -40 to +250 °F (-40 to +120 °C), other temperature ranges are available on request. Gearbox input and output flanges are designed in accordance with ISO 5211. MSS SP-101 flanges are available as an alternative.



Features

- Totally enclosed gearing
- Grease filled for life and fully sealed to IP67 as standard
- Comprehensive gear ratios combined with a selection of auxiliary input spur gear reducers
- Angular contact bearings supporting worm shaft
- Removable and repositionable output sleeve
- Repositionable baseplate
- Adjustable mechanical stops (at 0° and 90° ±5°)
- Inherently self-locking gear componentry

Environmental Specification

- IP67 as standard suitable for submerged duty to a depth of 3 feet (1 metre) for 30 minutes
- Temperature as standard: -40 to +250 °F (-40 to +120 °C)

Options

- Flexible input extensions
- IP68: 49 feet (15 metres) for 72 hours
- ATEX
- Buried, maritized, continuous submersible environments
- Stainless steel fasteners
- Low temperature option:
-76 to +250 °F (-60 to +120 °C)
- High temperature option:
-4 to +392 °F (-20 to +200 °C)

