

rotork®

Keeping the World Flowing
for Future Generations



CK Range

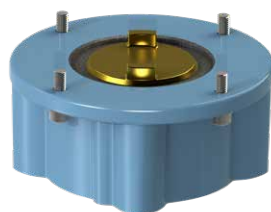
Spare parts manual

CK range

Spares modules



Module 1:
Gearcase



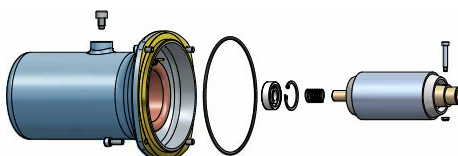
Module 2:
Bases & drive couplings



Module 3:
Mechanical Switch Mechanism
/ Digital Switch Mechanism



Module 4:
Handwheel



Module 5:
Motor



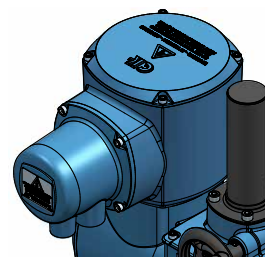
Module 6:
Centronik



Module 7:
Terminal plug



Module 8:
Additional Indicator Drive



Module 9:
Standard single-phase
starter pack



Module 20:
Mechanical Switch Mechanism
/ Digital Switch Mechanism cover



Module 66:
Atronik

Note: Full details from the actuator nameplate must be given when enquiring about or ordering spare parts

© Rotork 2025 all rights reserved. The name Rotork is a registered trademark. Rotork recognises all registered trademarks. The Bluetooth® word mark and logos are registered trademarks owned by Bluetooth SIG, Inc. and any use of such marks by Rotork is under license. Published and produced in the UK. POLTG0725. Rotork reserves the right to amend and change specifications without prior notice. For the latest version visit rotork.com

Health and safety

The electrical installation, maintenance and use of these actuators should be carried out in accordance with the National Legislation and Statutory Provisions relating to the safe use of this equipment, applicable to the site of installation.

For the UK: Electricity at Work Regulations 1989 and the guidance given in the applicable edition of "IEE Wiring Regulations" should be applied. Also the user should be fully aware of his duties under the Health and Safety Act 1974.

For the USA: NFPA70, National Electrical Code® is applicable.

The mechanical installation should be carried out as outlined in the manual and also in accordance with relevant standards such as British Standard Codes of Practice.

Only persons competent by virtue of their training or experience should be allowed to install, maintain and repair Rotork actuators. Work undertaken must be carried out in accordance with instructions in the manual. The user and those persons working on this equipment should be familiar with their responsibilities under any statutory provisions relating to the Health and Safety of their workplace.

WARNING: Motor temperature

With excessive use the motor surface temperature could reach 132 °C (270 °F).

Before starting work on actuator

Before commencing work, isolate all electrical supplies to the actuator and observe site safety regulations.

On completion of repair, refer to publication PUB111-007 for commissioning and start up procedures.

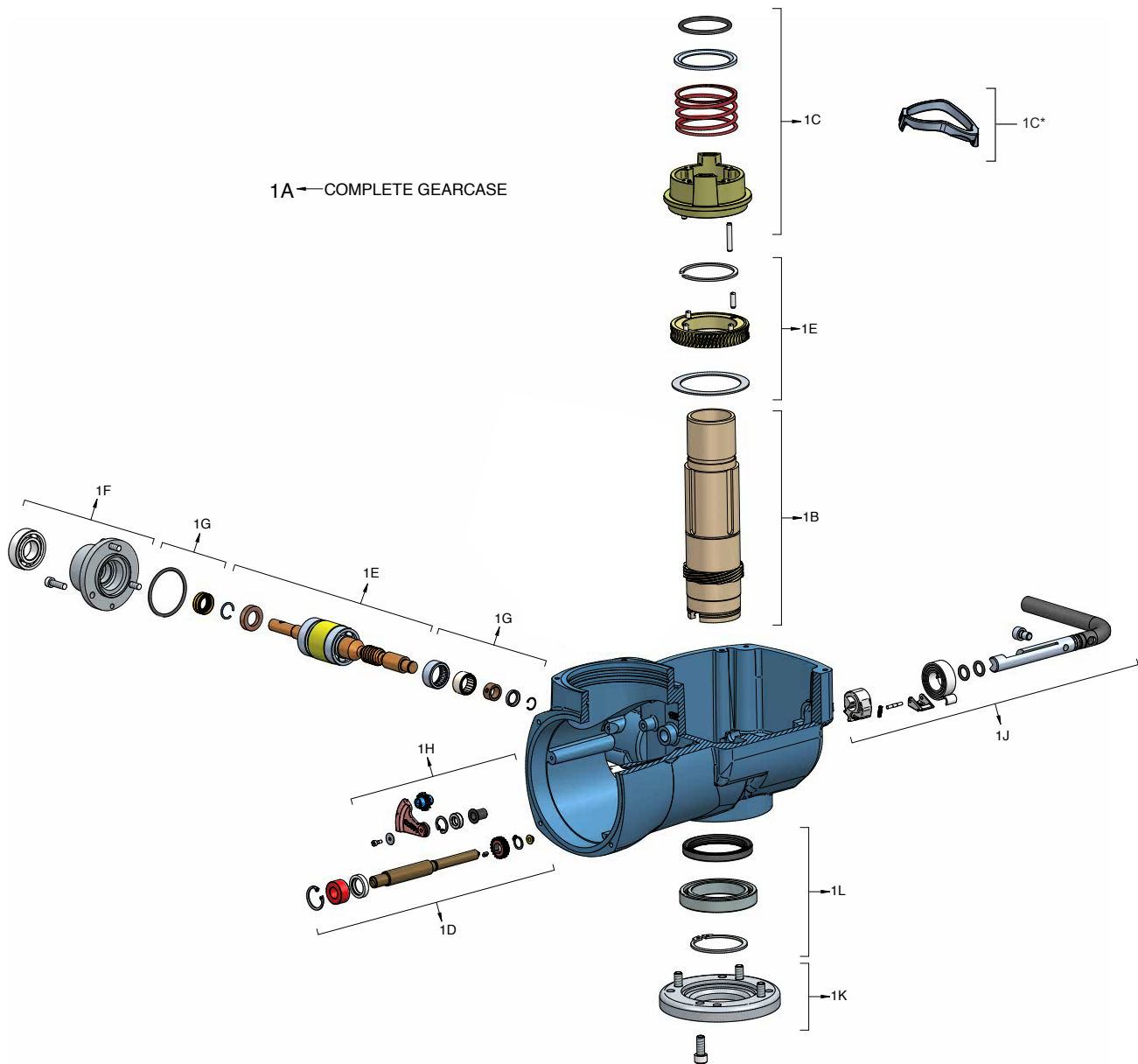
Remember that your actuator is only as watertight as you make it, after completing work. Conduit entries should be sealed in accordance with surrounding environment and with any requirements of the regulatory authority.

Seal unused entries with threaded metal plugs.

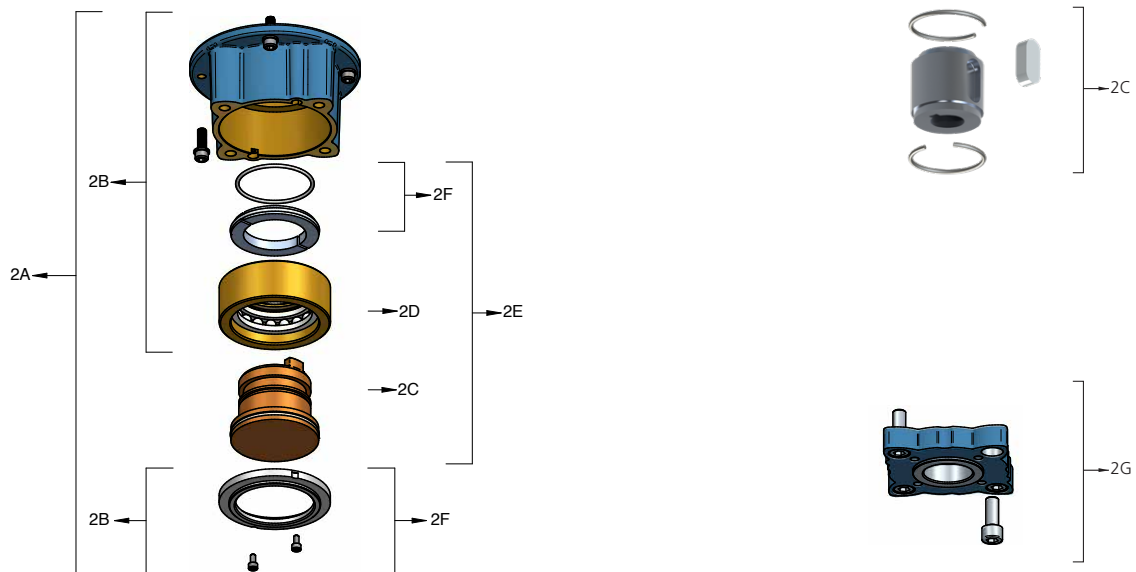
Ordering of spare parts

It is essential when ordering a spares module to give the actuator type and serial number.

Additional information obtained from the actuator name plate would be helpful to enable Rotork to double check the actuator specification. Spares modules may be ordered from your local representative, valve supplier, or direct from Rotork.



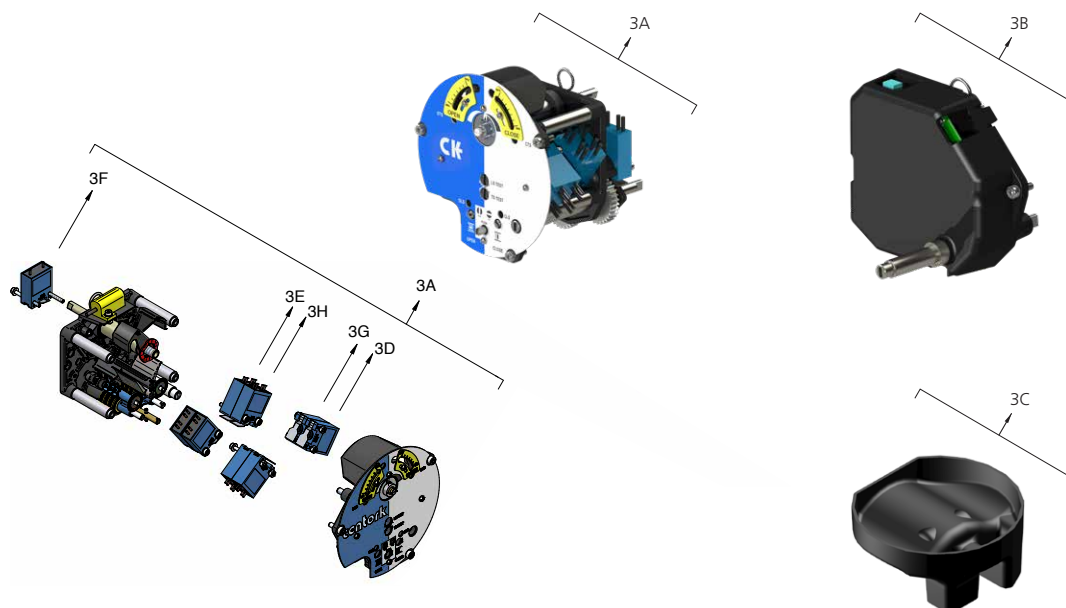
1A	Complete gearcase, centre column, wormshaft & wormwheel, torque spring pack	1G	Wormshaft maintenance kit. Bearings, seals, O-rings, screws etc.
1B	Centre column	1H	Torque mechanism, lever, quadrant gear, gear drive
1C	Sliding clutch, coil spring, washer, O-ring. * NOTE: Yoke only fitted in CK500.	1J	Hand / Auto mechanism, lever, cam, spring, stop bolt, seal
1D	Switch mechanism / encoder drive shaft, bush, clip, seal	1K	Gearcase base flange plate
1E	Wormwheel & wormshaft including spring pack	1L	Gearcase maintenance kit. O-rings, seals, bearings, circlips, screws etc.
1F	Wormshaft thrust end cap bearing assembly		



- 2A Thrust base assembly complete, all variants
- 2B Thrust base assembly less drive coupling
- 2C Drive coupling only
- 2D Thrust bearing assembly only
- 2E Drive coupling and thrust bearing assembly

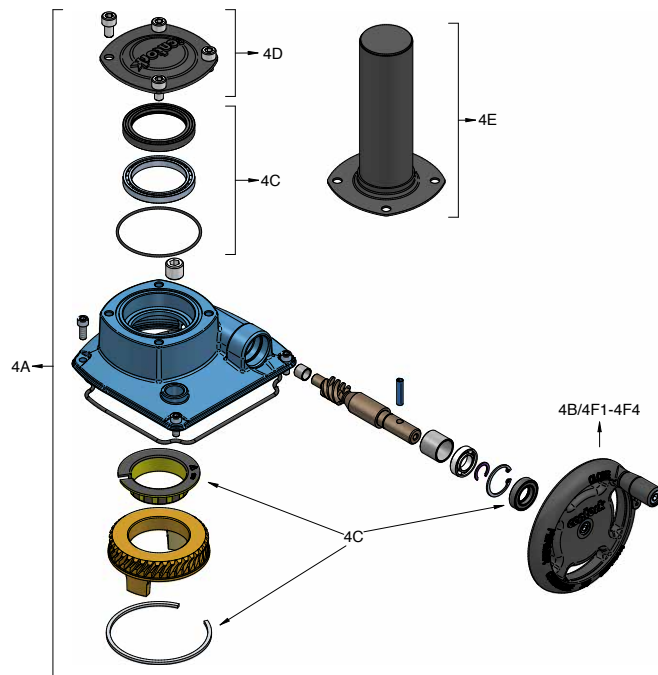
- 2F Base maintenance kit. O-rings, split ring, retainer clip
- 2G Thrust base adaptor F10 to F7 / FA10 to FA7
Note: only available for CK30/60

Spares module 3: Mechanical Switch Mechanism / Digital Switch Mechanism



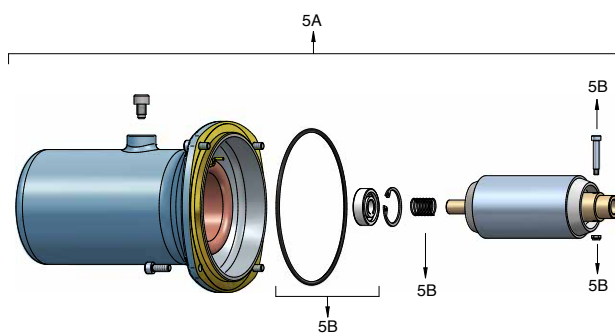
3A	Mechanical switch mechanism	3F	Blinker switch including loom
3A1	Mechanical switch mechanism (anti-clockwise)	3G	Additional torque indication switches x2 including looms
3B	Digital switch mechanism	3H	Additional limit switches x2 including looms
3C	Cable guide	3J	Heater
3D	Torque switches x2 including looms		
3E	Limit switches x2 including looms		

Spares module 4: Handwheel

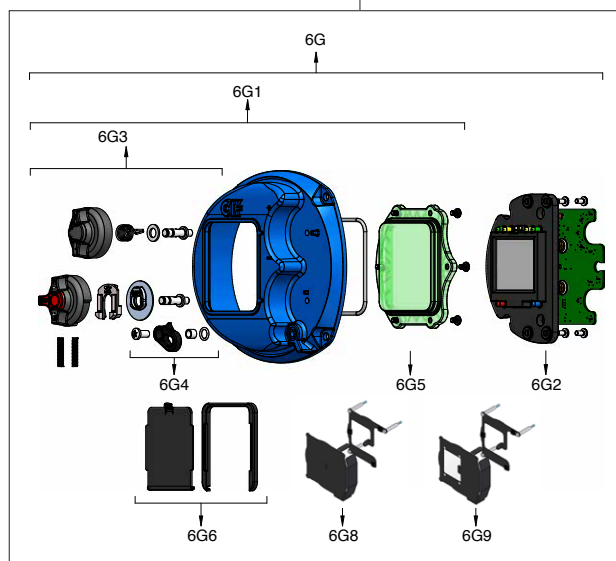
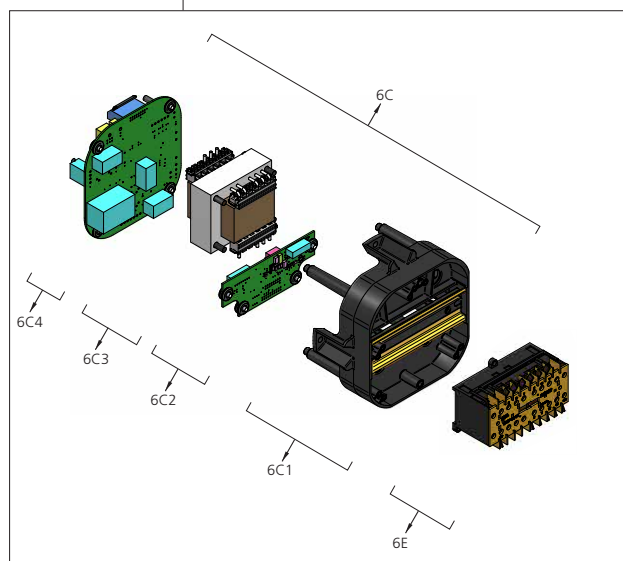
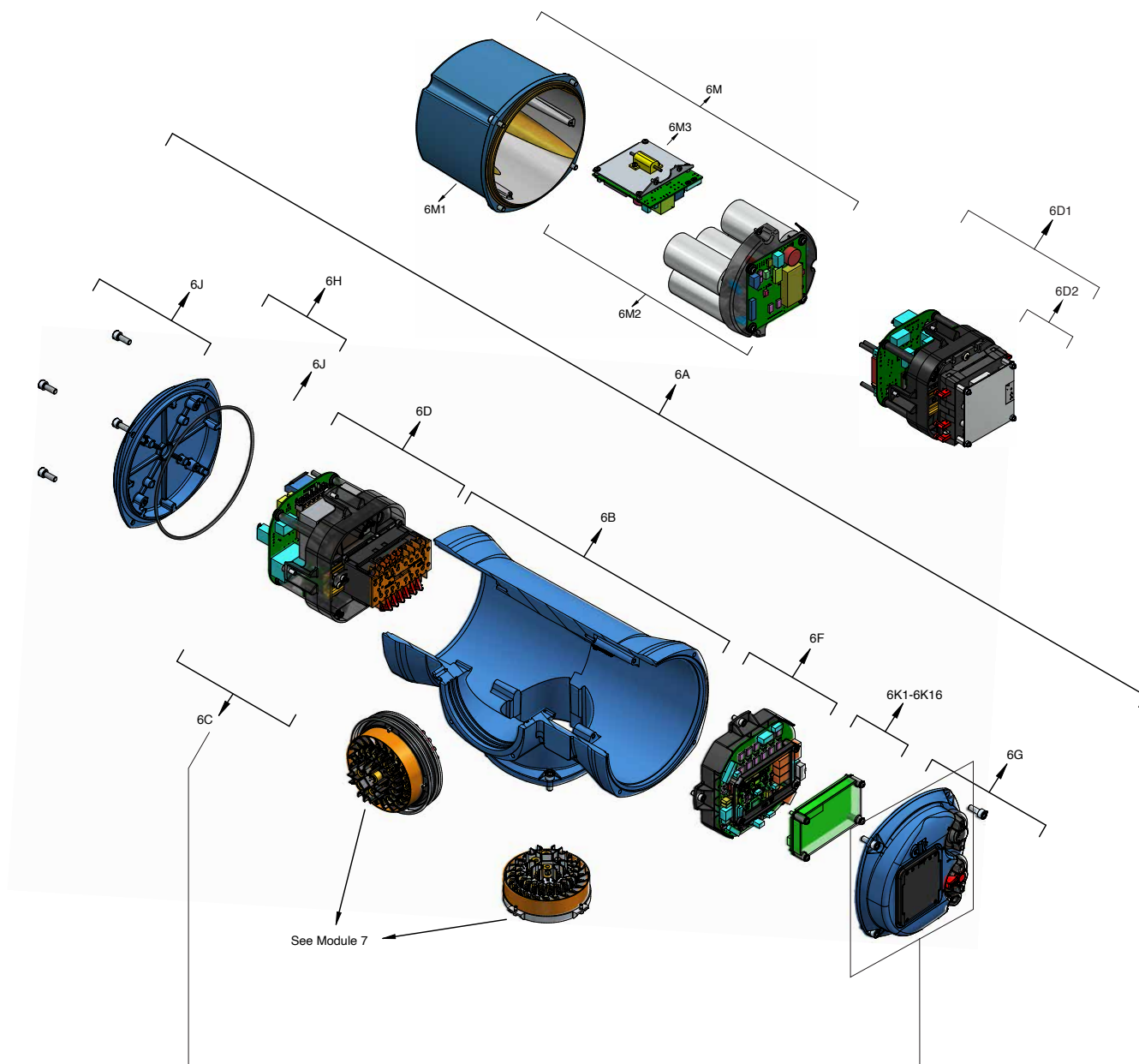


- 4A Handwheel assembly complete - worm gearing & handwheel
- 4B Handwheel only
- 4B1 Anti-clockwise label and screws
- 4C Side handwheel maintenance kit, bearing, O-rings, seals etc.
- 4D Handwheel spur box cover, plastic cover, O-ring, screws
- 4E Spindle cover tube
- 4F1 Size 2 handwheel for size 1
- 4F2 Size 2 handwheel for size 1 CCW
- 4F3 Size 3 handwheel for size 2
- 4F4 Size 3 handwheel for size 2 CCW

Spares module 5: Motor



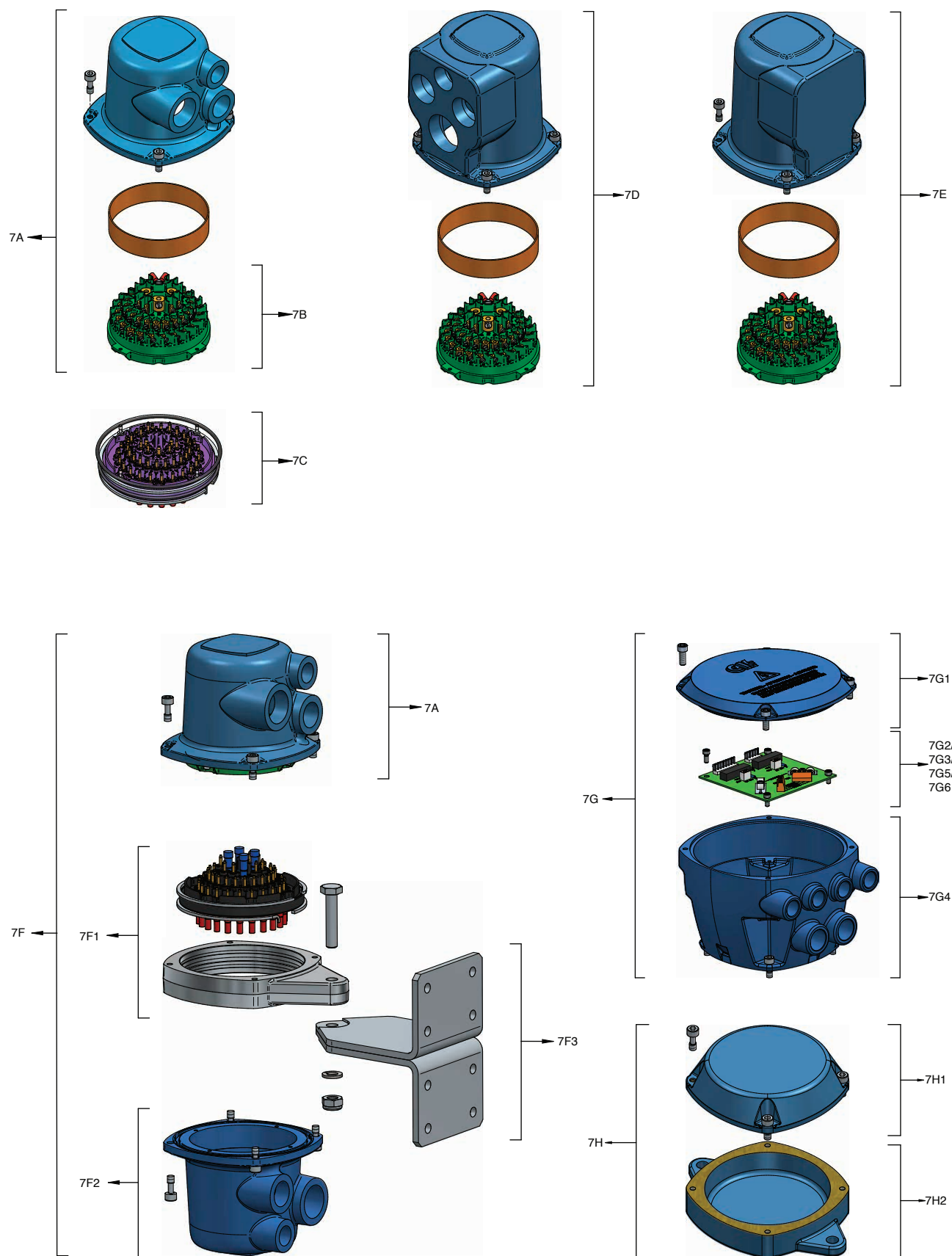
- 5A Motor assembly complete, stator/rotor, Motor cover, bearing, screws & O-ring
- 5B Motor maintenance kit, bearing, spring, screws & O-ring



Spares module 6: Centronik

6A	Centronik assembly complete	6K1	Profibus® DP
6B	Centronik cast body only	6K2	Profibus® DP dual channel
6C	Power module only	6K3	Modbus® RTU
6C1	Power module chassis	6K4	Modbus® RTU dual channel
6C2	Power PCB	6K5	Foundation Fieldbus®
6C3	Transformer	6K6	HART®
6C4	Fuse PCB	6K7	Extra 4 indication relay card
6D	Power module including reversing contactor	6K8	Analogue positioner + current position transmitter
6D1	Power module including solid state starter	6K9	Analogue current position transmitter (CPT)
6D2	Solid state starter only	6K10	Analogue current torque transmitter (CTT)
6E	Reversing contactor assembly only	6K11	Analogue current position transmitter (CPT) Loop powered
6F	Control PCB	6K12	Analogue current torque transmitter (CTT) Loop powered
6G	User interface cover complete assembly - Cover, control knobs, HMI PCB, O-ring	6K13	<i>Pakscan™</i>
6G1	Cover, control knobs. Not including HMI PCB	6K14	1 x Modbus RTU dual channel custom database A1 + 2 x network analogue card
6G2	User interface PCB	6K15	Modbus RTU dual channel with custom database A1
6G3	Both control knobs -Open Close and Local Remote	6K16	Network analogue card
6G4	Locking latch assembly	6L	Auxiliary DC to DC card
6G5	Window	6M	Single-phase motor starter capacitor pack Variable item
6G6	Window UV cover	6M1	Deep cover - O-ring and screws
6G7	Bluetooth® PCB	6M2	Capacitor pack and switch PCB
6G8	Vandal proof cover standard	6M3	Switch PCB
6G9	Vandal proof cover + viewer		
6H	End cover including O-ring		
6J	Cover screws and O-rings		

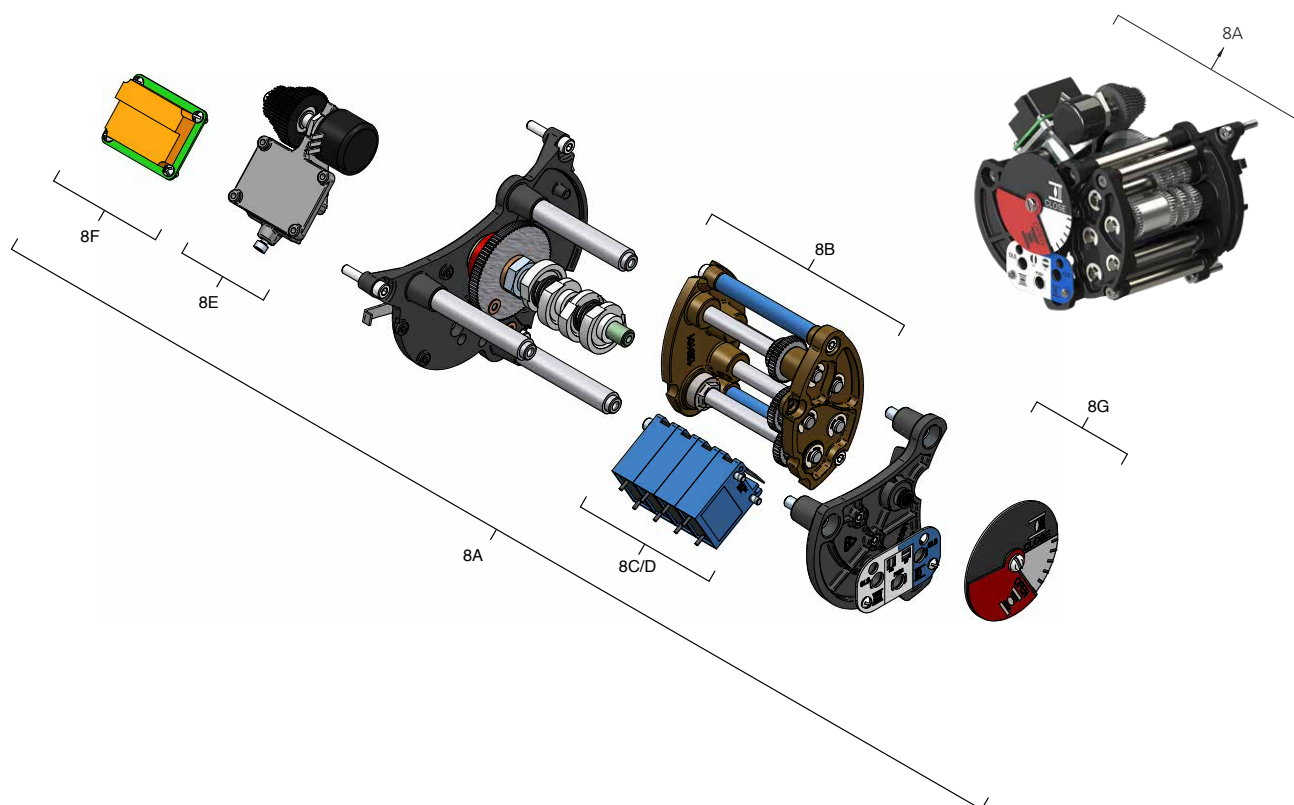
Spares module 7: Terminal plug / connector blocks



Spares module 7: Terminal plug / connector blocks

7A	Complete assembly
7B	Connector block with sockets
7C	Connector block with pins
7D	Plug assembly 4 conduit entries including connector block
7E	Plug assembly blank for customer customisation including connector block
7F	Remote mounting kit complete
7F1	Remote mounting frame
7F2	Connector housing
7F3	Mounting bracket, M10 fixing bolt, lock nut
7F4	DSM isolator PCB (not shown)
7G	Profibus disconnect module including PCB and connector block
7G1	Module cover
7G2	Profibus disconnect PCB only
7G3	Profibus dual channel disconnect PCB only
7G4	Modbus/Profibus disconnect housing and connector block only
7G5	Modbus disconnect PCB only
7G6	Modbus disconnect dual channel PCB only
7H	Parking module
7H1	Parking cover
7H2	Parking frame
7J	Terminal plug maintenance kit, O-ring, snap ring, spacer, screws (not shown)

Note: The same connector blocks are used for terminal plug / Centronik and Centronik / gearcase.



8A Gear drive including, position indicator, switches
Variable item

8B Gear cassette

8C Middle travel switches x2

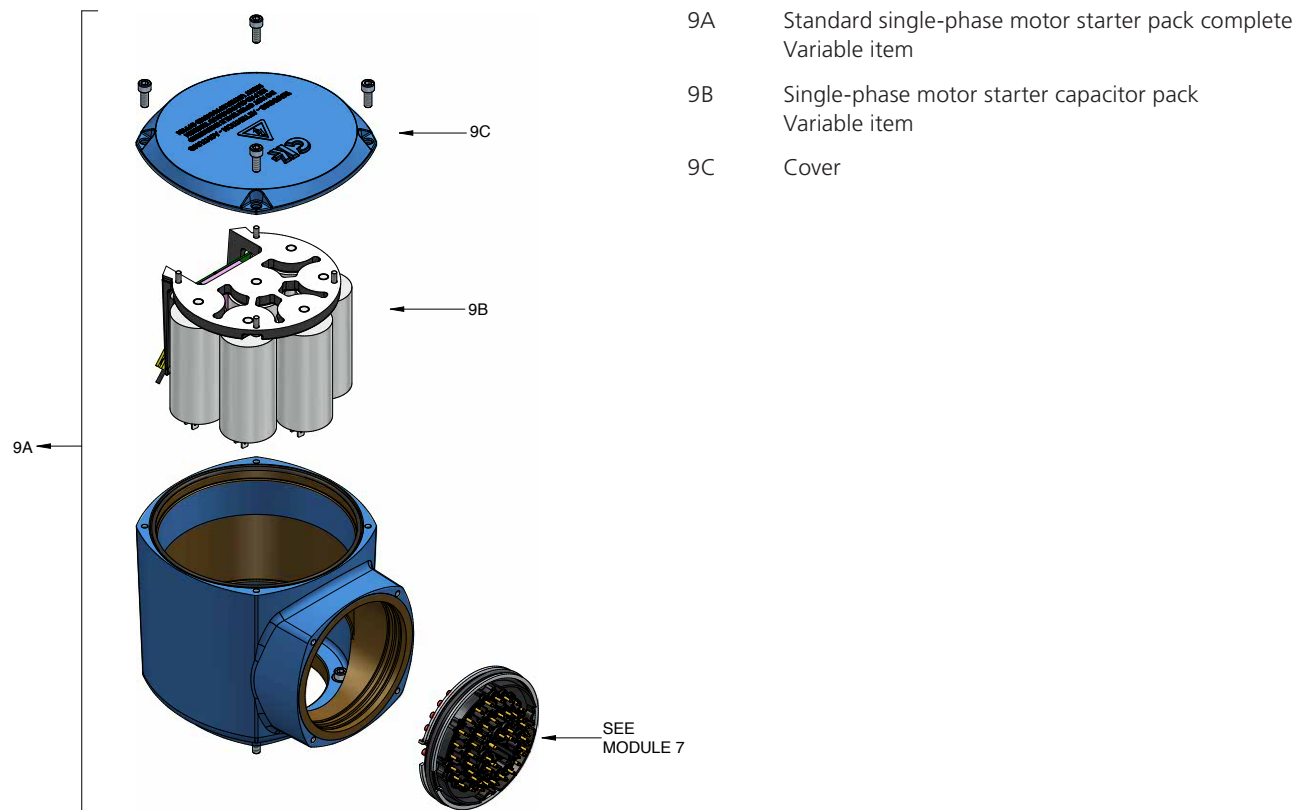
8D Middle travel Switches x4

8E Potentiometer + drive gear

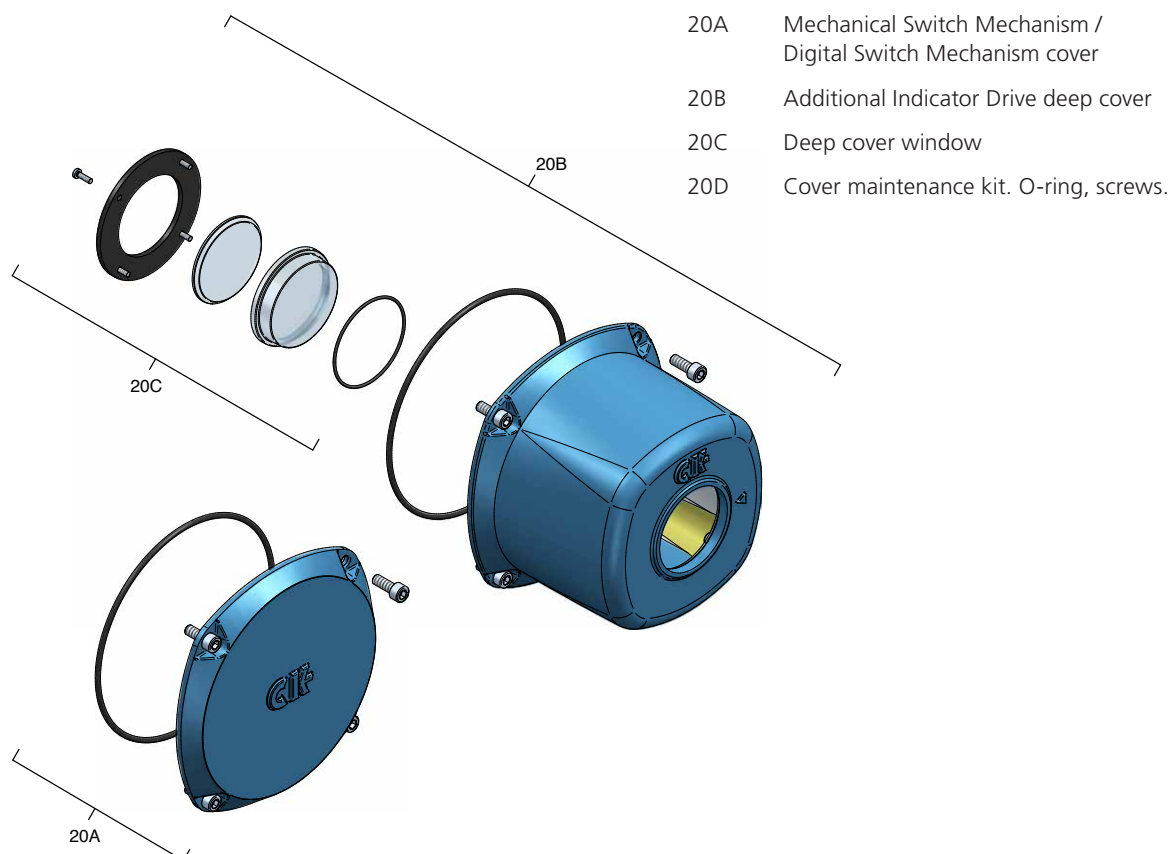
8F Analogue current position transmitter (CPT)
Standard build only.

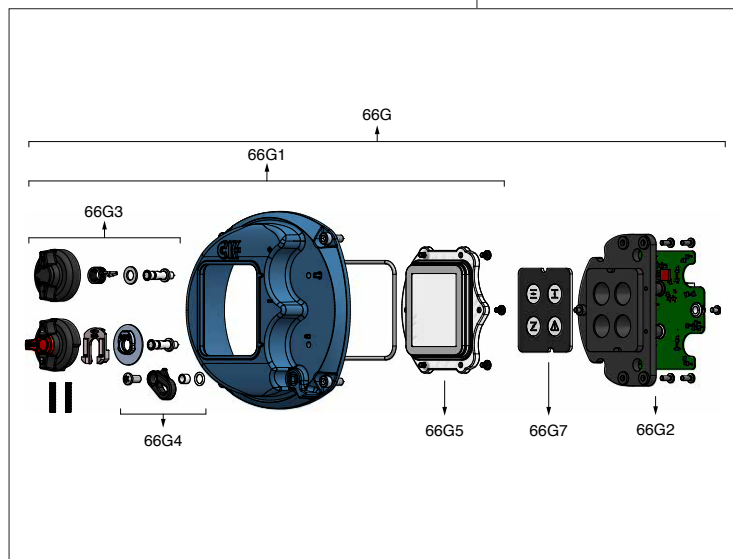
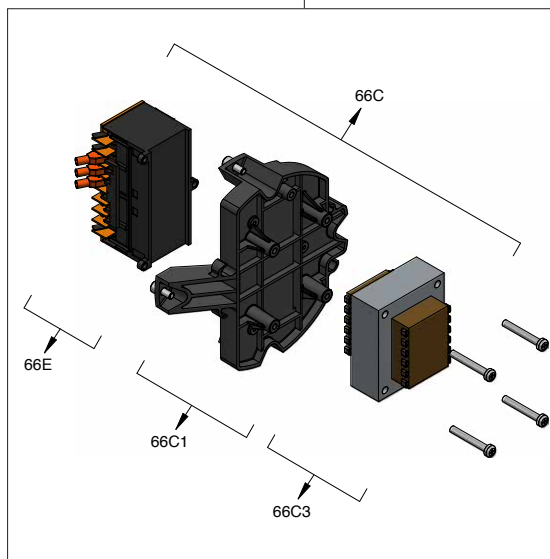
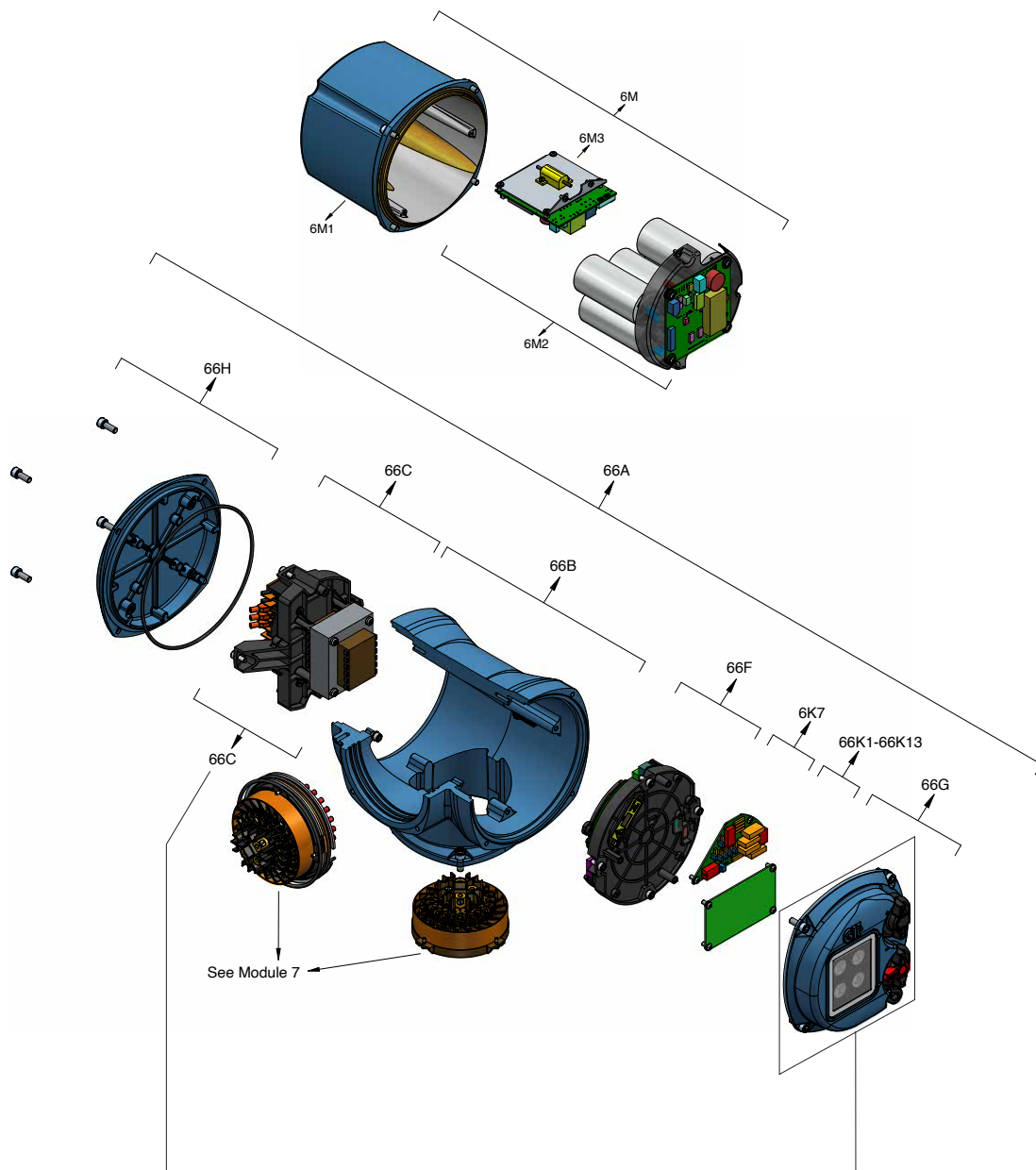
8G Mechanical position indicator disc

Spares module 9: Standard single-phase motor starter pack



Spares Module 20: Mechanical Switch Mechanism / Digital Switch Mechanism cover





Spares module 66: Atronik

66A	Atronik assembly complete	66K1	Profibus® DP
66B	Atronik cast body only	66K3	Modbus® RTU
66C	Power module assembly including reversing contactor	66K5	Foundation Fieldbus®
66C1	Power module chassis only	66K6	HART®
66C3	Transformer only	66K7	Extra 4 indication relay card
66E	Contactor only	66K8	Analogue positioner + current position transmitter PCB
66F	Control & Power PCB	66K11	Analogue positioner + loop powered current position transmitter PCB
66G	User interface complete assembly, LED status PCB, O-ring & screws	66K13	<i>Pakscan</i> ™
66G1	Cover assembly, control knobs. Not including LED status PCB		
66G2	LED status PCB		
66G3	Both control knobs, Open / Close and Local / Remote.		
66G4	Locking latch assembly		
66G5	Window		
66G7	Window icon card		
66H	End cover including O-ring and screws		
66J	Cover screws and O-rings kit		



Contact us now

mail@rotork.com

www.rotork.com

PUB111-008-00

Issue 08/25