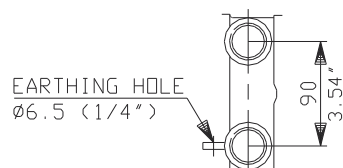


ACTUATOR SHOWN WITH F10 BASE.

CONDUIT ENTRIES (N.T.S)



TAPPED 2 X M32
STANDARD ALTERNATIVES IF SPECIFIED
2 X 1 1/4" NPT
2 X PG21

rotork

Rotork Controls Ltd.
Bath, England BA1 3JQ
Bath (01225)733200

Q300 DATA

Date 141097

Q300D